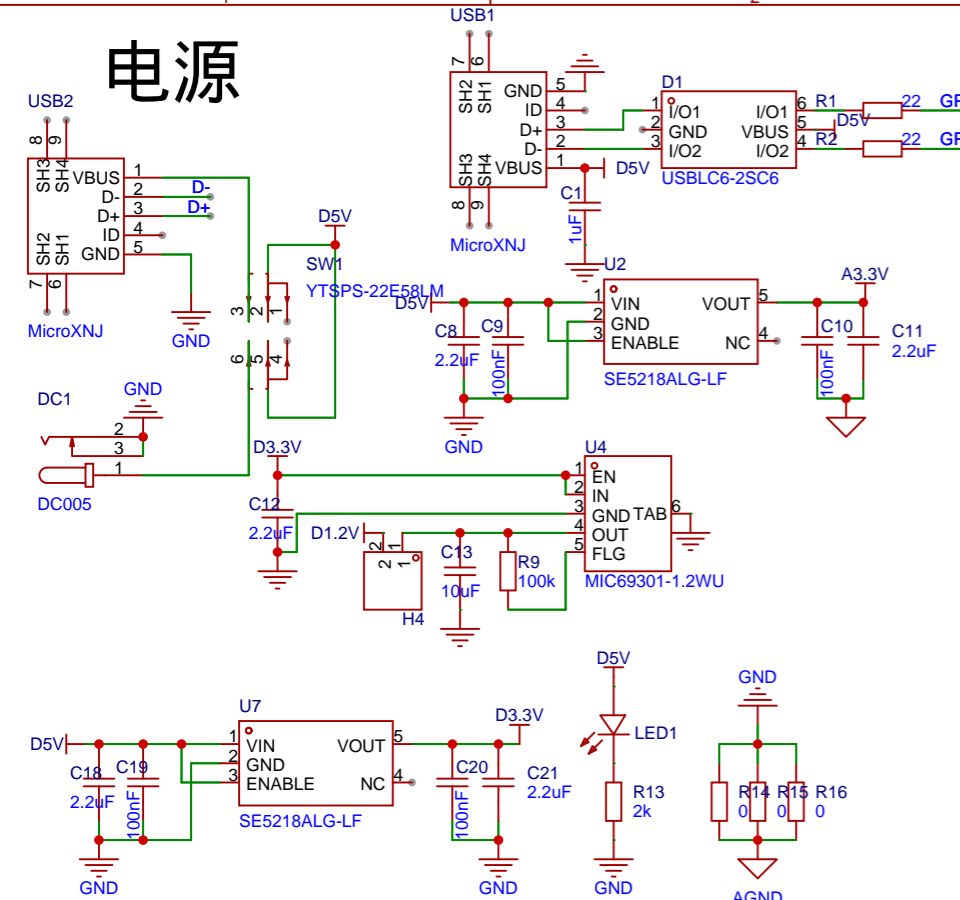
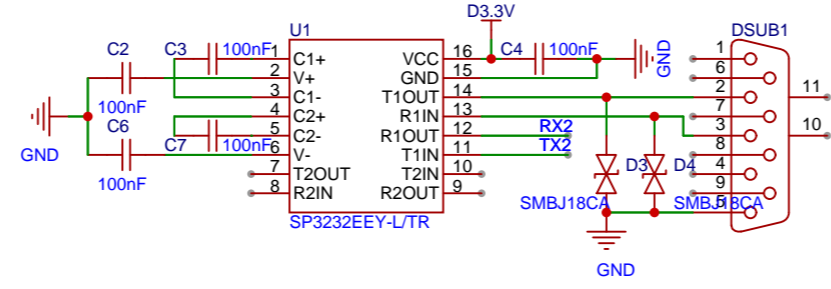


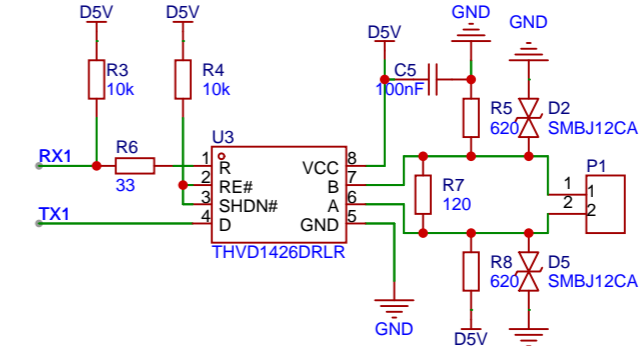
# 电源



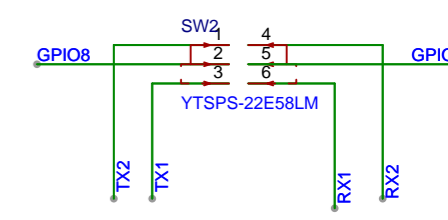
# RS232模块



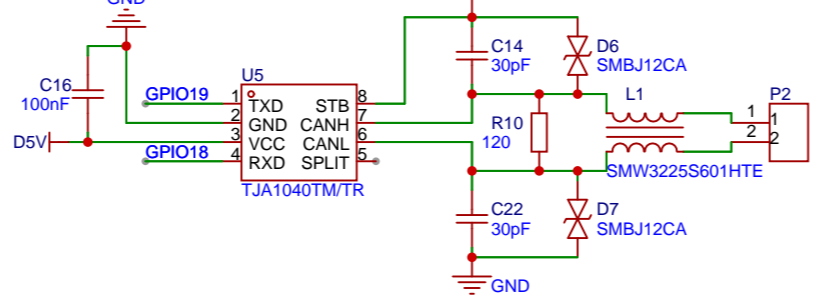
# RS485模块



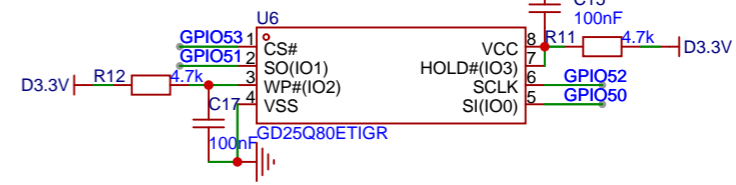
# ON:RS485 OFF:RS232



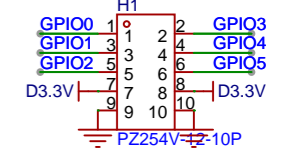
# CAN模块



# NOR FLASH

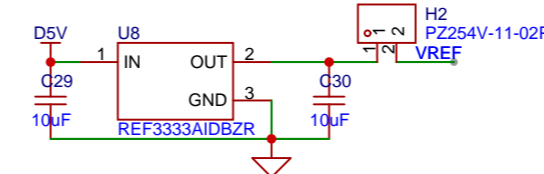


# FSI

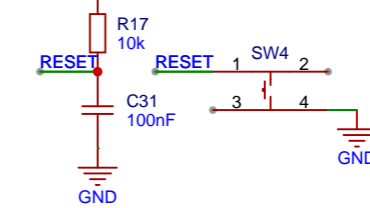


GPIO0 160	GPIO0/EMIF1_A13/ESC_GPIO	GPIO62 108	GPIO62
GPIO1 161	GPIO1/EMIF1_A14/ESC_GPIO	GPIO63 109	GPIO63
GPIO2 162	GPIO2/EMIF1_A15/ESC_GPIO	GPIO64 110	GPIO64
GPIO3 163	GPIO3/ESC_GP13	GPIO65 111	GPIO65
GPIO4 164	GPIO4/ESC_GP14	GPIO66 112	GPIO66
GPIO5 165	GPIO5/ESC_GP15	GPIO67 113	GPIO67
GPIO6 166	GPIO6/EMIF1_DQM0/ESC_GP16	GPIO68 114	GPIO68
GPIO7 167	GPIO7/EMIF1_DQM1/ESC_GP17	GPIO69 115	GPIO69
GPIO8 18	GPIO8/EMIF1_D17/ESC_PHY_LINKSTATUS	GPIO70 135	GPIO70
GPIO9 19	GPIO9/ESC_GPO1	GPIO71 136	GPIO71
GPIO10 1	GPIO10/EMIF1_CAS/ESC_TX0_DATA0	GPIO72 139	GPIO72
GPIO11 2	GPIO11/ESC_TX0_DATA1	GPIO73 140	GPIO73
GPIO12 4	GPIO12/EMIF1_A1/ESC_TX0_DATA2	GPIO74 141	GPIO74
GPIO13 5	GPIO13/EMIF1_CS0n/ESC_TX0_DATA3	GPIO75 142	GPIO75
GPIO14 6	GPIO14/EMIF1_D17/ESC_PHY_LINKSTATUS	GPIO76 143	GPIO76
GPIO15 7	GPIO15/EMIF1_DQM2/ESC_GPO7	GPIO77 144	GPIO77
GPIO16 8	GPIO16/ESC_RX1_CLK	GPIO78 145	GPIO78
GPIO17 9	GPIO17/ESC_RX1_DV	GPIO79 146	GPIO79
GPIO18 10	GPIO18/EMIF1_CS2n/ESC_RX1_ERR	GPIO80 148	GPIO80
GPIO19 12	GPIO19/EMIF1_CS3n/ESC_TX1_DATA3	GPIO81 149	GPIO81
GPIO20 13	GPIO20/EMIF1_BA0/ESC_TX1_DATA2	GPIO82 150	GPIO82
GPIO21 14	GPIO21/EMIF1_BA1/ESC_TX1_DATA1	GPIO83 151	GPIO83
GPIO22 11	GPIO22/EMIF1_RAS/ESC_TX1_DATA0/C0	GPIO84 154	GPIO84
GPIO23 21	GPIO23/EMIF1_CAS/ESC_PHY_RESETr/C1	GPIO85 155	GPIO85
GPIO24 59	GPIO24/EMIF1_DQM0/ESC_RX0_CLK	GPIO86 156	GPIO86
GPIO25 53	GPIO25/EMIF1_DQM1/ESC_RX0_DV	GPIO87 174	GPIO87
GPIO26 82	GPIO26/EMIF1_DQM2/ESC_RX0_ERR	GPIO88 170	GPIO88
GPIO27 125	GPIO27/EMIF1_DQM3/ESC_RX0_DATA0	GPIO89 171	GPIO89
GPIO28 74	GPIO28/EMIF1_CS4n/ESC_RX0_DATA1	GPIO90 172	GPIO90
GPIO29 73	GPIO29/EMIF1_SDCKE/ESC_RX0_DATA2	GPIO91 173	GPIO91
GPIO30 79	GPIO30/EMIF1_CLK/ESC_LATCH1	GPIO92 174	GPIO92
GPIO31 58	GPIO31/EMIF1_WEN	GPIO93 175	GPIO93
GPIO32 16	GPIO32/EMIF1_Oen	GPIO94 176	GPIO94
GPIO33 69	GPIO33/EMIF1_RNW/ESC_LED_ERR	GPIO99 118	GPIO99
GPIO34 70	GPIO34/EMIF1_BA1/ESC_SYNC0	GPIO103 126	GPIO103
GPIO35 71	GPIO35/EMIF1_A0/ESC_SYNC1	GPIO104 147	GPIO104
GPIO36 83	GPIO36/EMIF1_A1	GPIO105 106	GPIO105
GPIO37 84	GPIO37/EMIF1_A2	GPIO106 20	GPIO106
GPIO38 85	GPIO38/EMIF1_A3	GPIO133 22	GPIO133
GPIO39 86	GPIO39/EMIF1_A4/ESC_MDIO_DATA	GPIO198 26	GPIO198
GPIO40 87	GPIO40/EMIF1_A2/ESC_GPO2	GPIO199 22	GPIO199
GPIO41 89	GPIO41/EMIF1_A3/ESC_I2C_SCL	GPIO200 23	GPIO200
GPIO42 30	GPIO42	GPIO201 24	GPIO201
GPIO43 31	GPIO43	GPIO202 25	GPIO202
GPIO44 13	GPIO44/ESC_TX1_CLK	GPIO203 27	GPIO203
GPIO45 15	GPIO45/EMIF1_A5/ESC_TX1_ENA	GPIO204 28	GPIO204
GPIO46 28	GPIO46/EMIF1_A6/ESC_MDIO_CLK	GPIO205 29	GPIO205
GPIO47 29	GPIO47/EMIF1_A7/ESC_MDIO_DATA	GPIO206 30	GPIO206
GPIO48 90	GPIO48/EMIF1_A8/ESC_PHY_CLK	GPIO207 55	GPIO207
GPIO49 93	GPIO49/EMIF1_A9	GPIO208 56	GPIO208
GPIO50 94	GPIO50/EMIF1_A10/ESC_LATCH0	GPIO209 57	GPIO209
GPIO51 95	GPIO51/EMIF1_A11/ESC_LATCH1	GPIO210 58	GPIO210
GPIO52 96	GPIO52/EMIF1_A12/ESC_MDIO_CLK	GPIO211 59	GPIO211
GPIO53 97	GPIO53/EMIF1_D31/ESC_MDIO_DATA	GPIO212 60	GPIO212
GPIO54 98	GPIO54/EMIF1_D30/ESC_PHY_CLK	GPIO213 62	GPIO213
GPIO55 00	GPIO55/EMIF1_D29/ESC_PHY0_LINKSTATUS	GPIO214 63	GPIO214
GPIO56 01	GPIO56/EMIF1_D28/ESC_TX0_ENA	GPIO215 64	GPIO215
GPIO57 02	GPIO57/EMIF1_D27/ESC_TX0_CLK	GPIO216 65	GPIO216
GPIO58 03	GPIO58/EMIF1_D26/ESC_LED_LINK0_ACTIVE	GPIO217 66	GPIO217
GPIO59 04	GPIO59/EMIF1_D25/ESC_LED_LINK1_ACTIVE	GPIO218 67	GPIO218
GPIO60 05	GPIO60/EMIF1_D24/ESC_LED_ERR	GPIO219 61	GPIO219
GPIO61 07	GPIO61/EMIF1_D23/ESC_LED_RUN	GPIO224 92	GPIO224

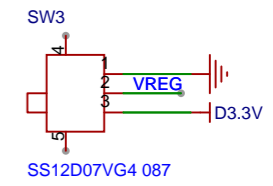
# 外部参考电压



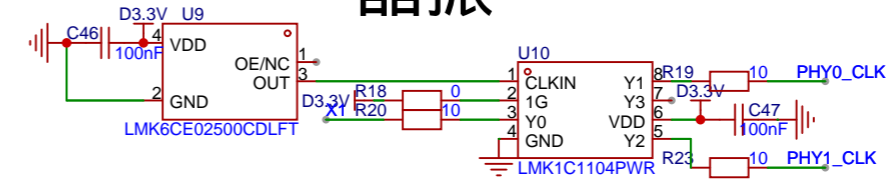
# 复位



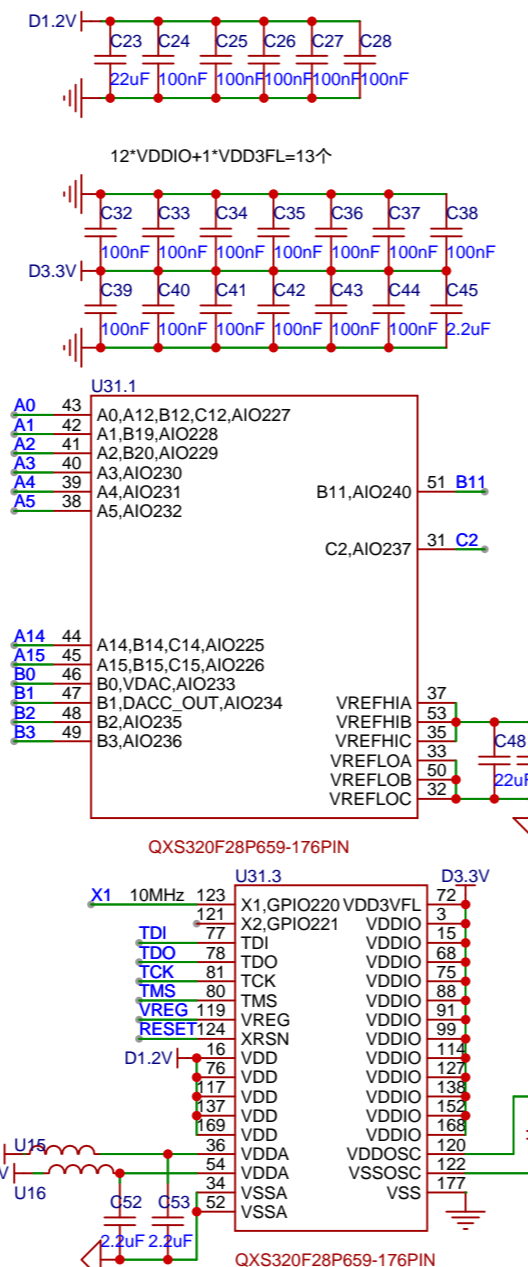
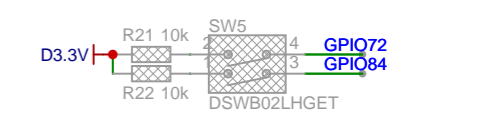
# 供电选择



# 晶振



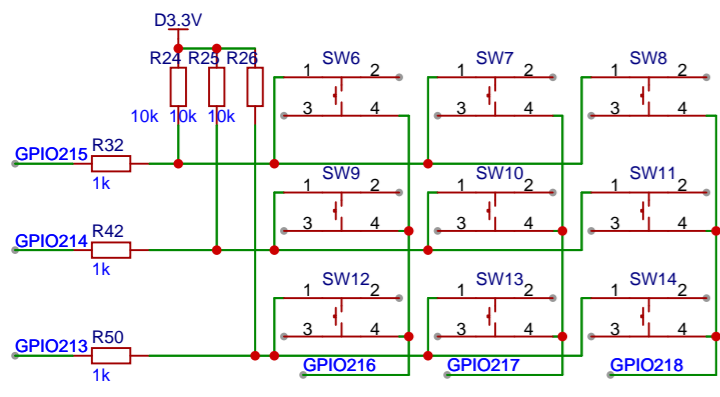
# BOOT引导模式



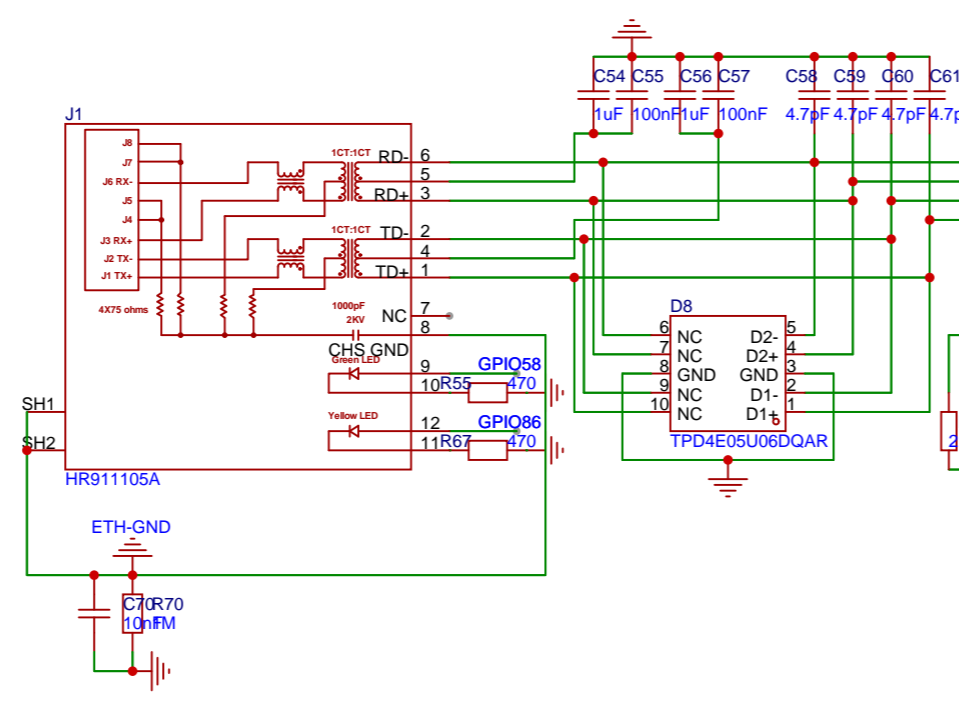
GPIO10 40	GPIO11 39	GPIO12 38	GPIO13 37	GPIO14 36	GPIO15 35	GPIO16 34	GPIO17 33	GPIO18 32	GPIO19 31	GPIO20 29	GPIO21 28	GPIO22 27	GPIO23 26	GPIO24 25	GPIO25 24	GPIO26 23	GPIO27 22	GPIO28 21	GPIO29 20	GPIO30 19	GPIO31 18	GPIO32 17	GPIO33 16	GPIO34 15	GPIO35 14	GPIO36 13	GPIO37 12	GPIO38 11	GPIO39 10	GPIO40 9	GPIO41 8	GPIO42 7	GPIO43 6	GPIO44 5	GPIO45 4	GPIO46 3	GPIO47 2	GPIO48 1	GPIO49 0	GPIO50 0	GPIO51 0	GPIO52 0	GPIO53 0	GPIO54 0	GPIO55 0	GPIO56 0	GPIO57 0	GPIO58 0	GPIO59 0	GPIO60 0	GPIO61 0	GPIO62 0	GPIO63 0	GPIO64 0	GPIO65 0	GPIO66 0	GPIO67 0	GPIO68 0	GPIO69 0	GPIO70 0	GPIO71 0	GPIO72 0	GPIO73 0	GPIO74 0	GPIO75 0	GPIO76 0	GPIO77 0	GPIO78 0	GPIO79 0	GPIO80 0	GPIO81 0	GPIO82 0	GPIO83 0	GPIO84 0	GPIO85 0	GPIO86 0	GPIO87 0	GPIO88 0	GPIO89 0	GPIO90 0	GPIO91 0	GPIO92 0	GPIO93 0	GPIO94 0	GPIO95 0	GPIO96 0	GPIO97 0	GPIO98 0	GPIO99 0	GPIO100 0
-----------	-----------	-----------	-----------	-----------	-----------	-----------	-----------	-----------	-----------	-----------	-----------	-----------	-----------	-----------	-----------	-----------	-----------	-----------	-----------	-----------	-----------	-----------	-----------	-----------	-----------	-----------	-----------	-----------	-----------	----------	----------	----------	----------	----------	----------	----------	----------	----------	----------	----------	----------	----------	----------	----------	----------	----------	----------	----------	----------	----------	----------	----------	----------	----------	----------	----------	----------	----------	----------	----------	----------	----------	----------	----------	----------	----------	----------	----------	----------	----------	----------	----------	----------	----------	----------	----------	----------	----------	----------	----------	----------	----------	----------	----------	----------	----------	----------	----------	----------	-----------

原理图	P659开发板		创建日期	2025-07-14
板子	P659开发板		更新日期	2025-08-18
绘制			图页	P1
审阅			QXS320F28P659开发评估板0714	
版本	V1.0	尺寸	A4	页 1 共 3
嘉立创EDA				

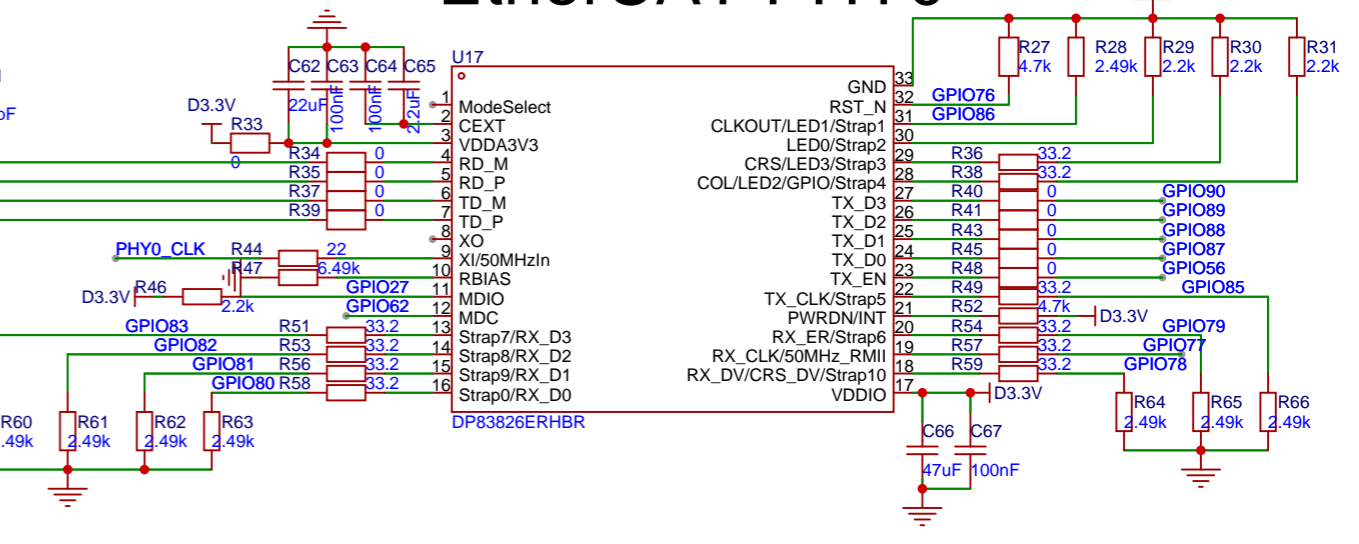
# 矩阵按键模块



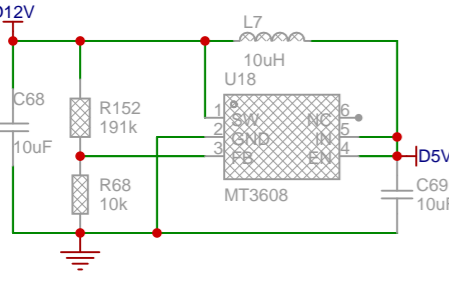
# EtherCAT模块



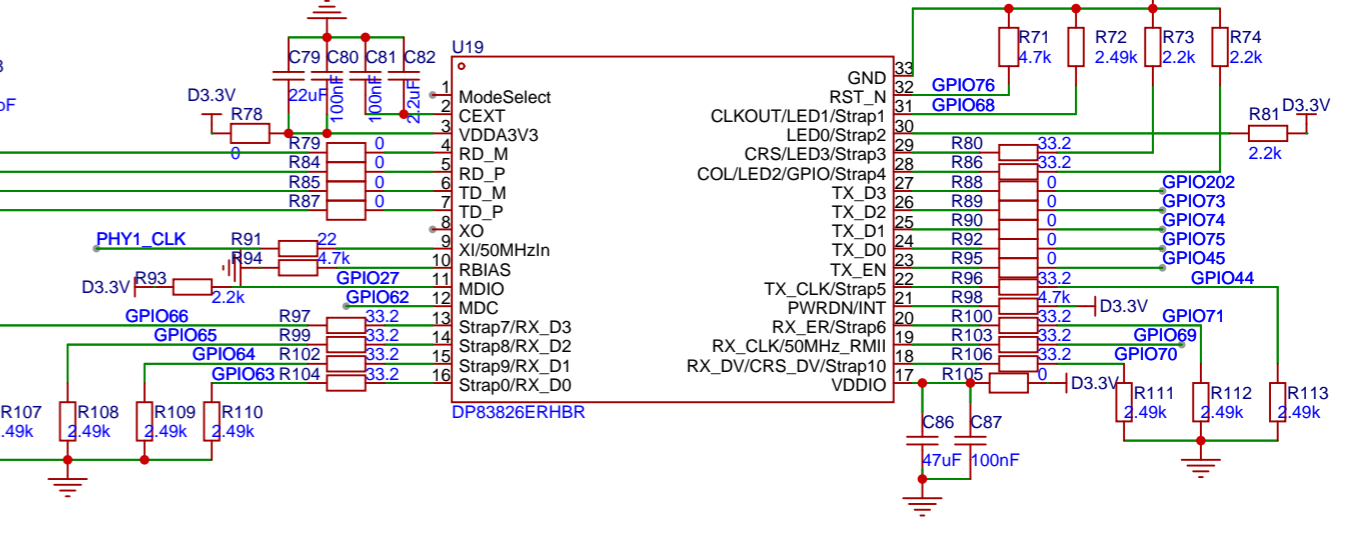
# EtherCAT PHY0



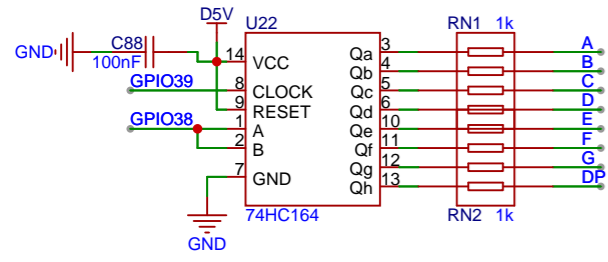
# LIN



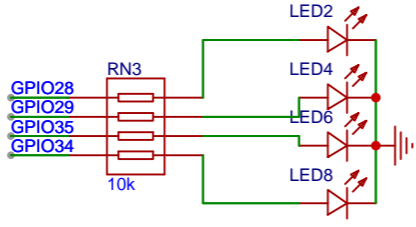
# EtherCAT PHY1



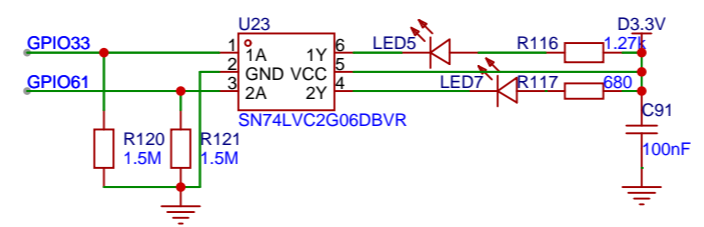
# 数码管显示模块



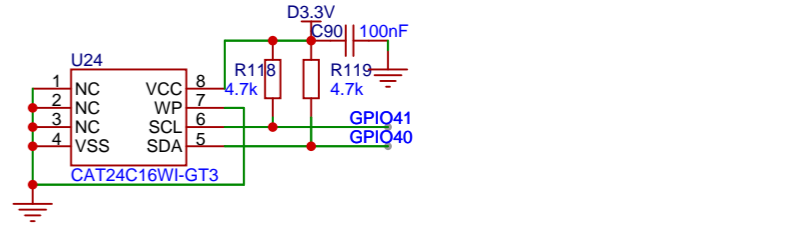
# LED



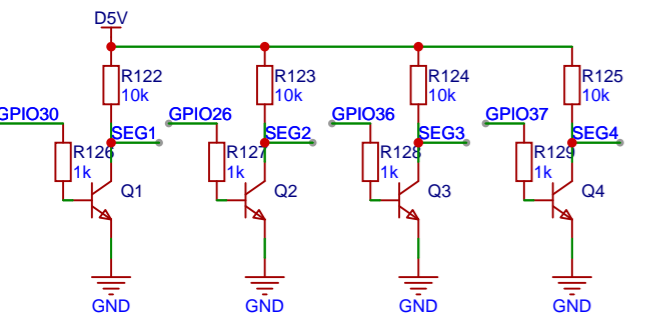
# Run and Error LEDs



# EtherCAT EEPROM



# ADC模块



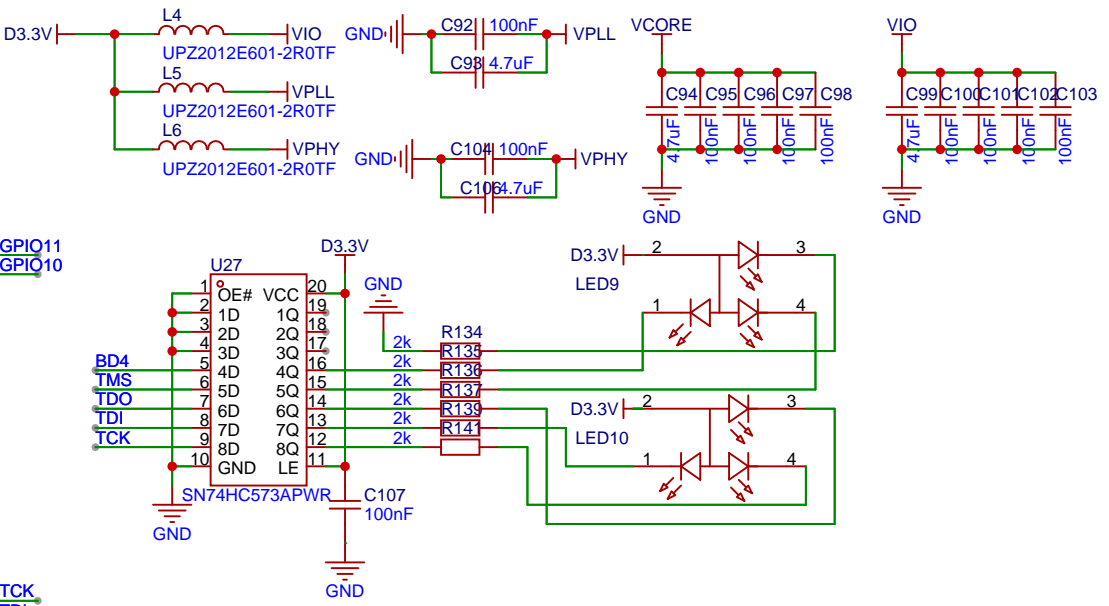
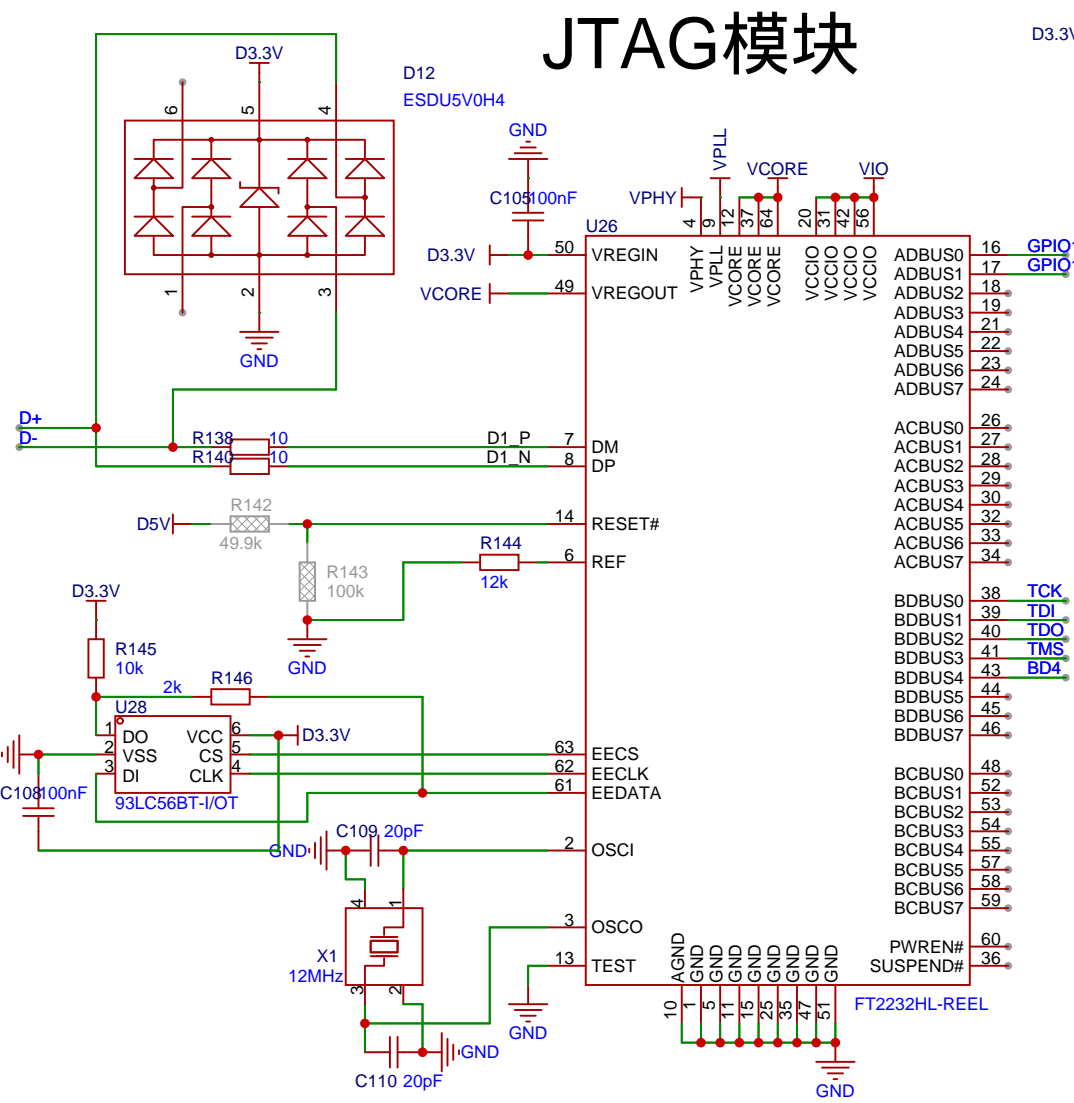
# 温度采集模块



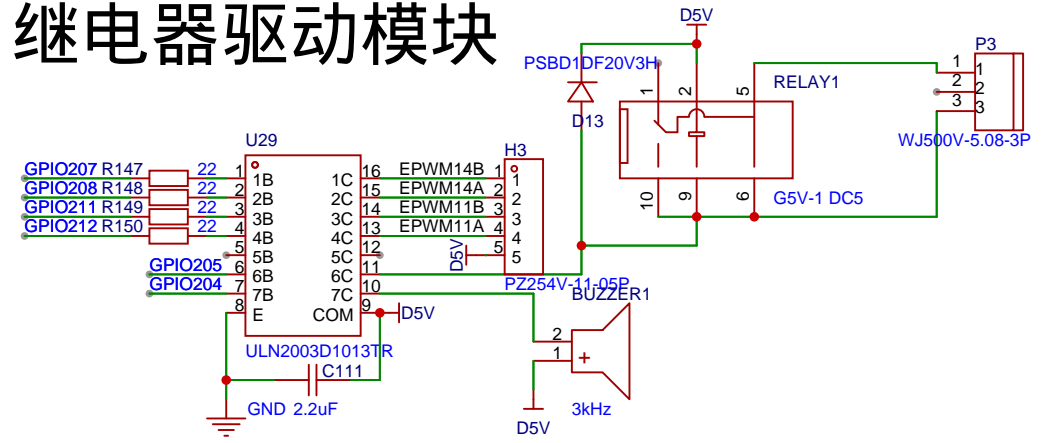
原理图	P659开发板	创建日期	2025-07-14
板子	P659开发板	更新日期	2025-08-18
绘制		图页	P2
审阅		QXS320F28P659开发评估板0714	
版本		尺寸	页 2 共 3
V1.0		A4	嘉立创EDA



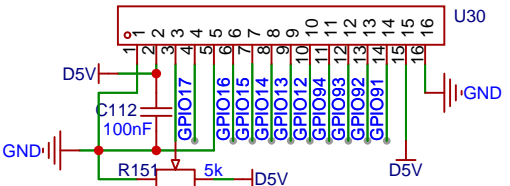
# JTAG模块



# 无刷电机，蜂鸣器 继电器驱动模块



# LCD1602液晶模块



原理图	P659开发板		创建日期	2025-07-14
板子	P659开发板		更新日期	2025-07-30
绘制			图页	P3
审阅	QXS320F28P659开发评估板0714			
			版本	尺寸
			V1.0	A4
嘉立创EDA			页	3 共 3
嘉立创EDA				